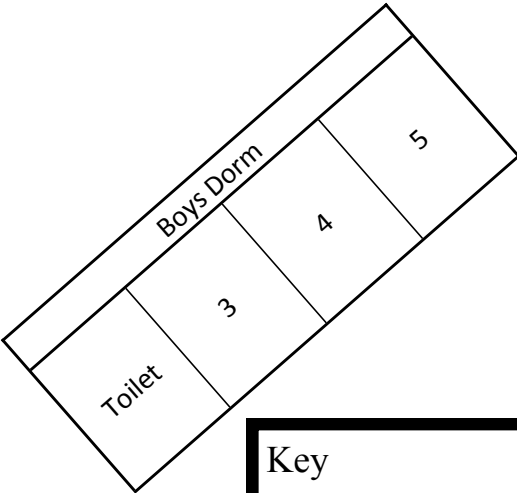
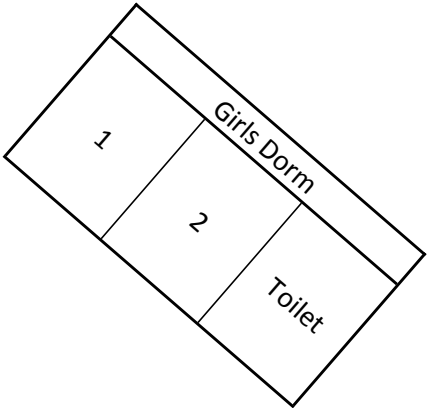




Eltham Presbyterian Campsite Accommodation Map

6	T	S	K	8
7	Lounge			9
Lodge				

Chalet	14	15
	Lounge	
		T S



Main Kitchen and Hall		
Kitchen	Hall	L
		AT + AS

River Cottage	
10	11
	12

TET Cottage	
13	
T & S	K + L

Key

T = Toilet
 S = Shower
 K = Kitchenette
 L = Lounge
 AT + AS = Accessible Toilet and Accessible Shower.

PTO for bedding layout

Girls Rooms (20 People)				Boys Rooms (30 People)							
Girls Room 1 (10 People)		Girls Room 2 (10 People)		Boys Room 3 (10 People)				Boys Room 4 (10 People)		Boys Room 5 (10 People)	
T		T		T		T		T		T	
B		B		B		B		B		B	
T		T		T		T		T		T	
B		B		B		B		B		B	
T		T		T		T		T		T	
B		B		B		B		B		B	
T		T		T		T		T		T	
B		B		B		B		B		B	
S		S		S		S		S		S	
S		S		S		S		S		S	

Lodge (13 People)	
Lodge 6 (4 people)	
T	
S	
D	
Lodge 7 (3 people)	
T	
S	
B	
Lodge 8 (3 people)	
T	
S	
B	
Lodge 9 (3 people)	
T	
S	
B	

River Cottage (7 people)	
RC 10 (3 People)	
S	
S	
S	
RC 11 (2 People)	
T	
B	
RC 12 (2 People)	
T	
B	

TET Cottage (6 People)	
TET Cottage 13 (6 People)	
S	
D	
T	
TET Lounge (2 people)	
SB	

Chalet (9 People)	
Chalet 14 (3 People)	
T	
B	
S	
Chalet 15 (3 People)	
T	
B	
S	
Chalet Lounge (3 People)	
SB	
S	

The double beds in the TET cottage and the Lodge are also bottom bunks. The two sofa beds in the TET Lounge and Chalet Lounge are both double sofa beds. We can provide beds to sleep 85 people but can accommodate more in tents, caravans or additional mattresses if required.

Key	
T	Top bunk
S	Single bed
B	Bottom bunk
SB	Sofa bed
D	Double bed